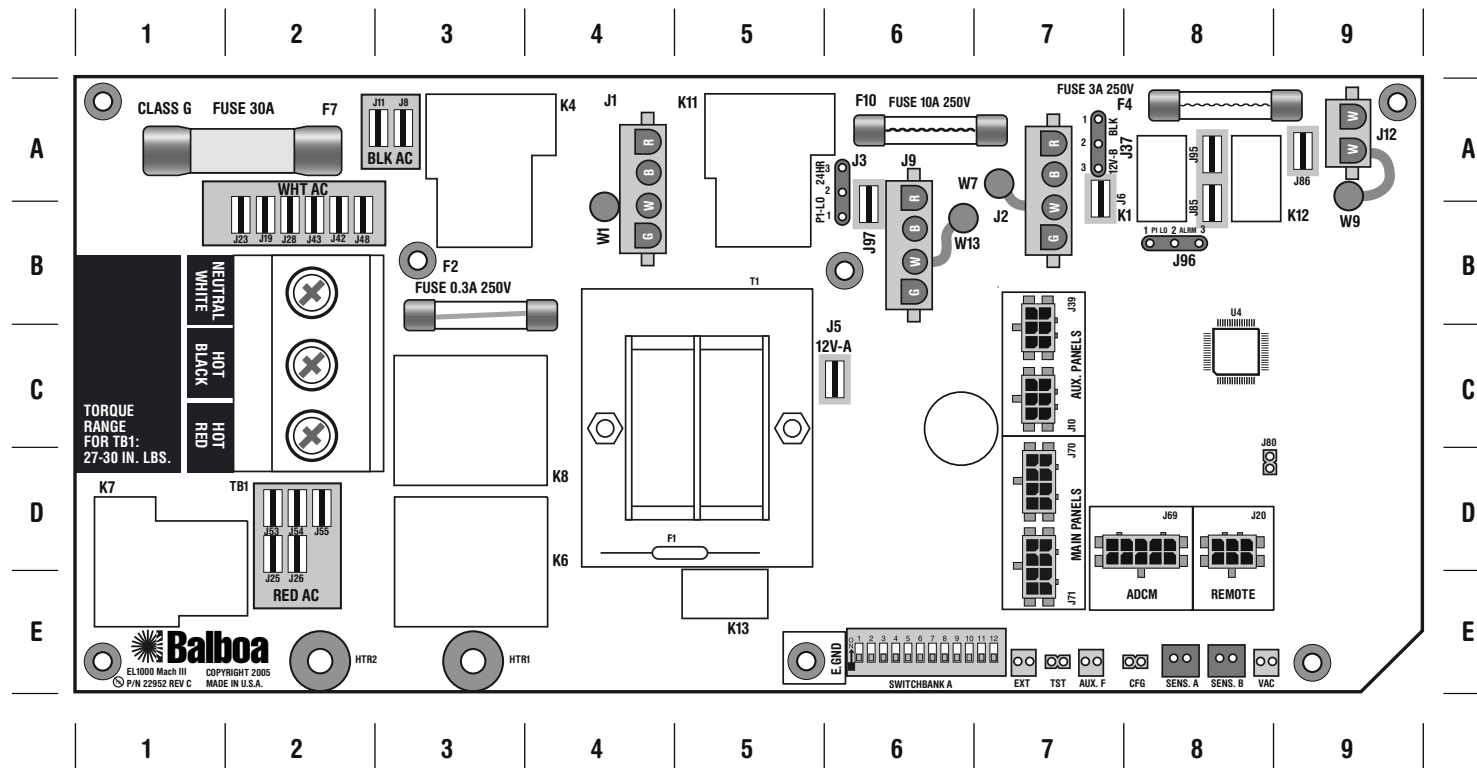


EL1000 Mach 3 Configuration Guide

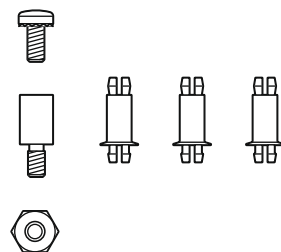


Output Features

Quadrant

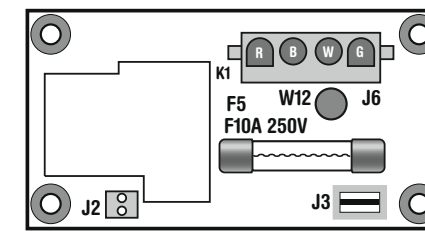
- J1 + W1 – 2-Speed Pump 1
- J2 + W7 – Audio/Visual
- J9 + W13 – Ozone (Separate Relay 120V or 240V)
- J12 + W9 – Spa Light (12V or 120V) Check J37 Setting

- 4-A
- 7-C
- 6-B
- 9-A

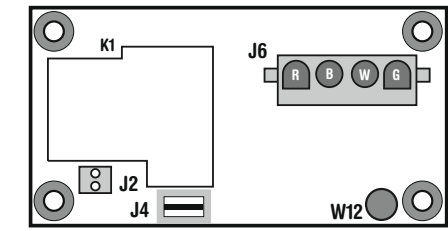


X-Mount P **PN 53933**
 Used for mounting any Expander Board in a plastic enclosure. Standoffs attach to heater mounting bracket.

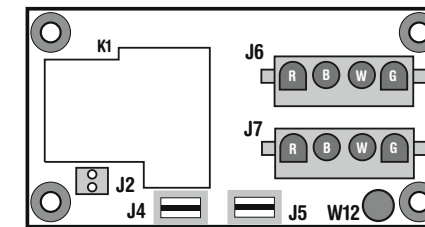
EL1000 Mach 3 Expander Board Options



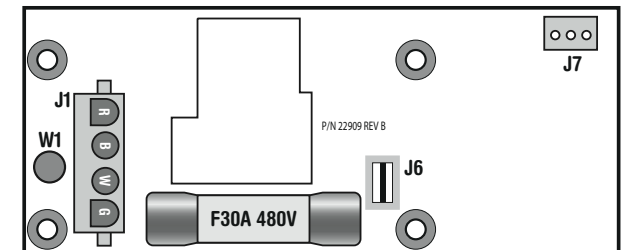
X-B **PN 53310**
 Used for a Blower output ONLY.
 • Cannot be used with X-P



X-P **PN 53544**
 Used for a 1-speed Pump 2 output ONLY.
 • Cannot be used with X-B



X-03 **PN 53426**
 Used for running Ozone and/or Circ Pump at voltage independent of Pump 1.
 • Requires Adapter Cable PN 25339 to connect J4 on X-03 to J9 pin 1 (6-A) on main PCBA.
 • Circ Pump and Ozone must be same voltage.



X-P231 **PN 53681**
 Can replace the X-P in cases where branch circuit protection is needed for high amperage devices that would over-burden power input fuse F7 (2-A) on the main PCBA. This allows J6 on the X-P231 to connect directly to Black AC (3-A) on the main EL1000 PCBA.