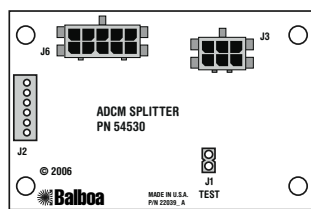
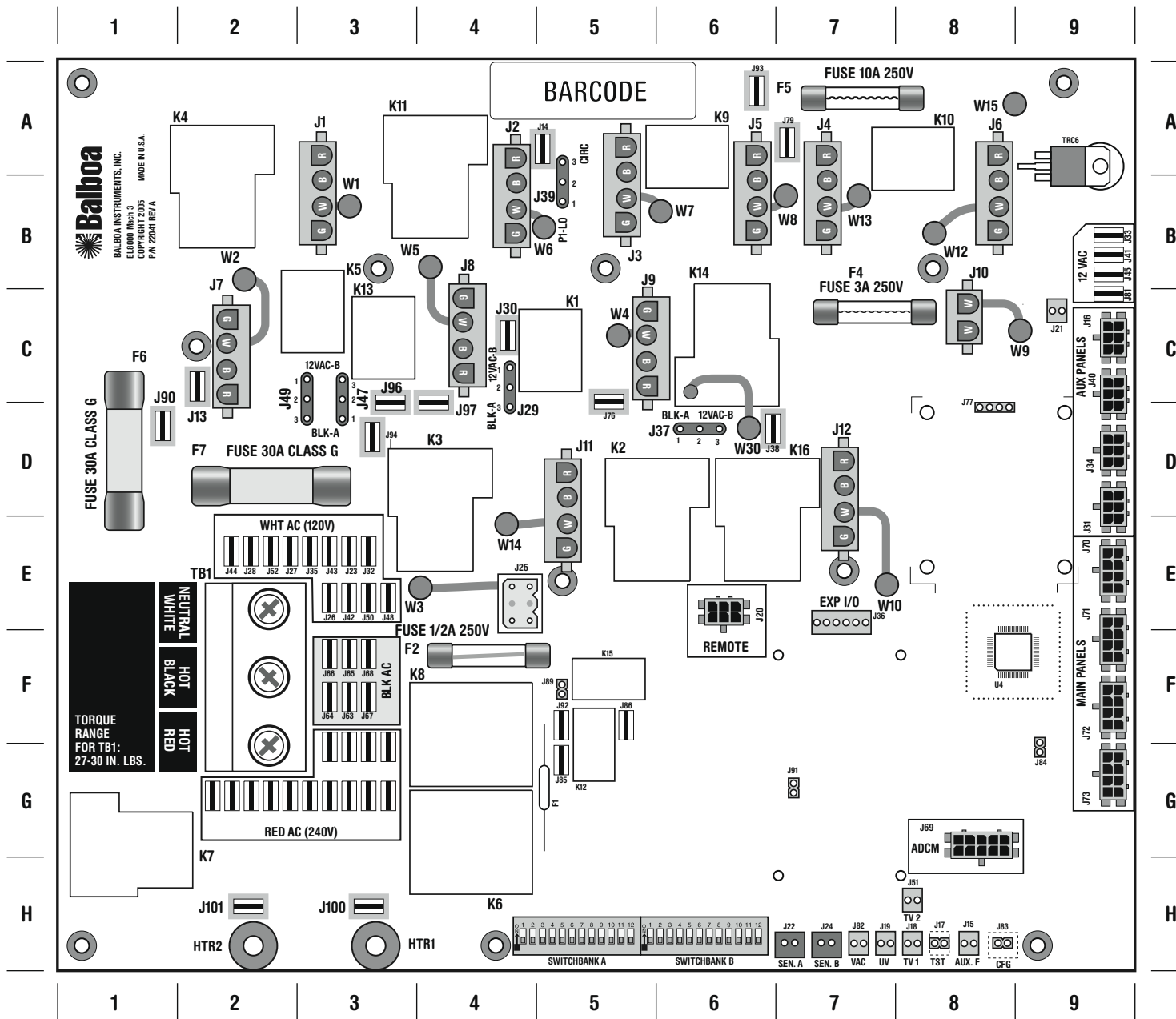
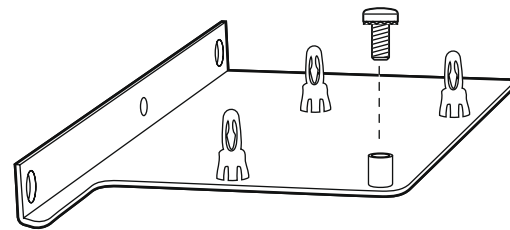


EL8000 Mach 3 Configuration Guide

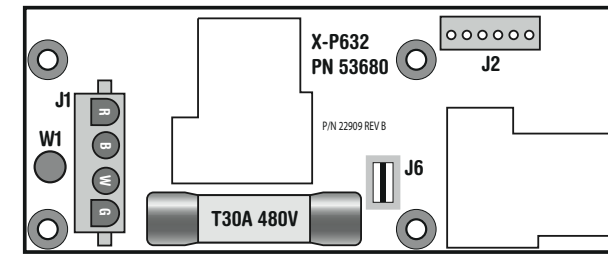


ADCM SPLITTER KIT PN 54530
 Required when using a Menu-driven panel.
 Kit includes PCB, stand-offs, and cable.
 Note: Software v29 or higher required.
 • J2 connects to ADCM IN (J69) on main PCBA.
 • J3 connects to Menu Panel or Transceiver.
 • J6 connects to tester or F.A.S.T. station.



X-Mount M PN 53914
 Used for mounting any Expander Board in a metal enclosure.
 Bracket attaches to heater mounting straps

EL8000 Expansion Options



X-P632 PN 53680
 Used for an additional 2-speed Pump output.
 Relay control J2 plugs into the EXP I/O connector J36 on the Main PCBA (Quadrant 7-E, near W10).

Expander boards that REPLACE the Blower function:
 Relay control for these options is connected to J21 on the Main PCBA (Quadrant 9-C, near W9). Do not use the Blower Connector J6 if one of these is used.

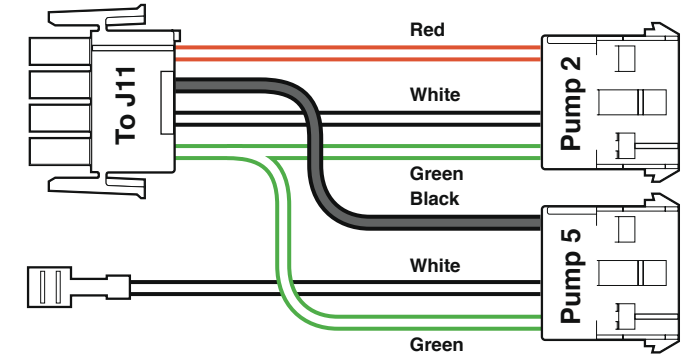
X-P PN 53544
 Used for an on-off Device without a fuse.

X-B PN 53310
 Used for an on-off Device with 10A fuse.

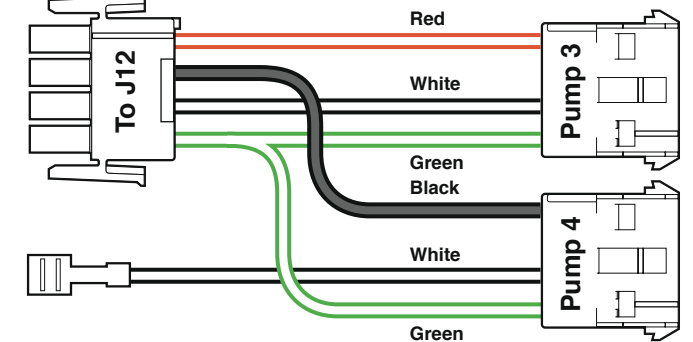
X-P231 PN 53681
 Used for an on-off Device with 30A fuse.

Output Features

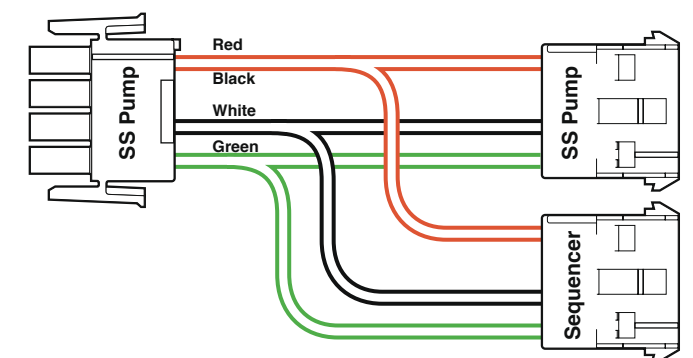
Output Features	Quadrant
J1 + W1 - 2-Speed Pump 1	3-B
J2 + W6 - Output tied to Pump 1 Low (J39 - P1-Lo)	4-B
- OR output tied to Circ Pump (J39 - Circ)	
J3 + W7 - Circ Pump	5-B
J4 + W13 - Ozone (Separate Relay 120V or 240V)	7-B
J5 + W8 - A.V.	6-B
J6 + W12 - 3-speed blower	8-B
J10 + W9 - Spa Light (12V or 120V/240V) (Check J37 setting)	8-C
J7 + W2 - Misc (120V or 240V) (Check J47 setting)	2-C
J8 + W5 - Fiber Optic (12V or 120V/240V) (Check J47 + J49 setting)	4-C
J9 + W4 - Option (on/off, no timeout) or Mister (12V or 120V/240V) (Check J29 setting)	5-C
J11 + W14 - 2-Speed Pump 2	5-D
J12 + W10 - 2-Speed Pump 3 (W30 to J94)	7-D
W3 - Sets Transformer Voltage (120V or 240V)	4-E
	(Setting must match transformer installed in system.)



PS-25 PN 25094
 Used to split the output from the Pump 2 Connector (J11) into a single-speed Pump 2 and single-speed Pump 5.
 White wire quick connect goes to Main PCB Red AC for 240 Pumps or to Wht AC for 120V Pumps.



PS-34 PN 25093
 Used to split the output from the Pump 3 Connector (J12) into a single-speed Pump 3 and single-speed Pump 4.
 White wire quick connect goes to Main PCB Red AC for 240 Pumps or to Wht AC for 120V Pumps.



ELS-VALVE PN 22934
 Used to split the output from a single-speed Pump to allow a Valve Sequencer to be powered by the pump's output.